



# FerroSelect™ QP anti-CD3 Kit

Simply magnetic

Positive selection entails briefly incubating your cell sample with biotinylated antibody to any of our several specificities and subsequently adding our FerroSelect™ streptavidin ferrofluid. Following brief incubation periods, as short as 5 minutes, cells can be collected from the cell suspension using either our Quadrupole magnets or our FerroSelect Array.

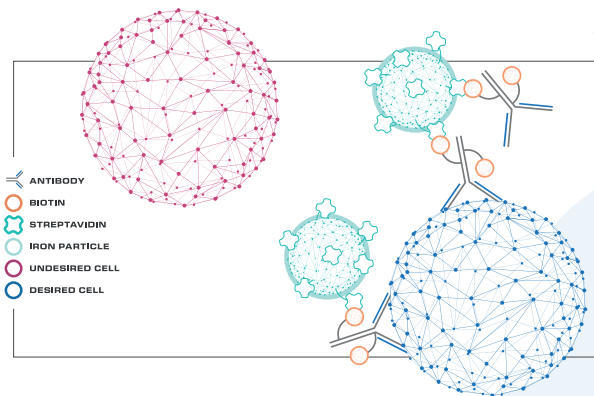


Figure 1: Positive cell selection involves attaching ferrofluid particles to the cell of interest (desired cell) while avoiding non-specific binding to undesired cells. Our fully recombinant xeno-free streptavidin/biotin binding technology affords high specificity and efficiency in selection procedures

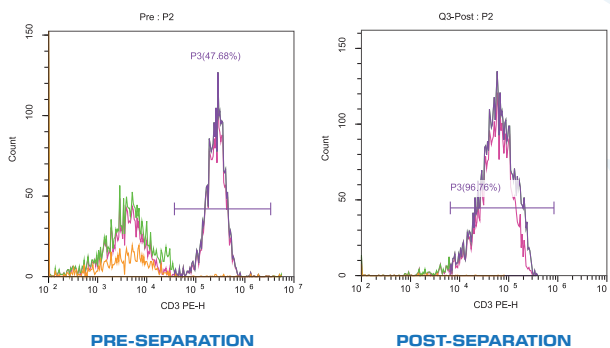


Figure 2: Selection of CD3<sup>+</sup> (T cells) using a quadrupole magnetic system, directly translatable to our FerroSelect Array

FerroSelect QP anti-CD3 Kit contains one vial of biotinylated anti-CD3 and one vial of streptavidin ferrofluid sufficient for selection of CD3<sup>+</sup> human T cells from approximately  $2.4 \times 10^8$  nucleated blood cells using either of our FerroSelect QP Magnets.

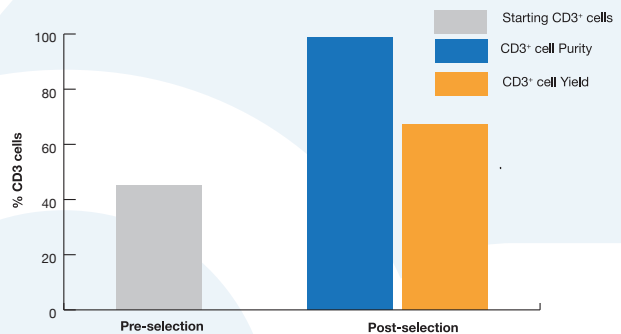


Figure 3: Positive cell selection of CD3<sup>+</sup> cells from a fresh leukopak of human cells, using our CD3<sup>+</sup> cell selection kit

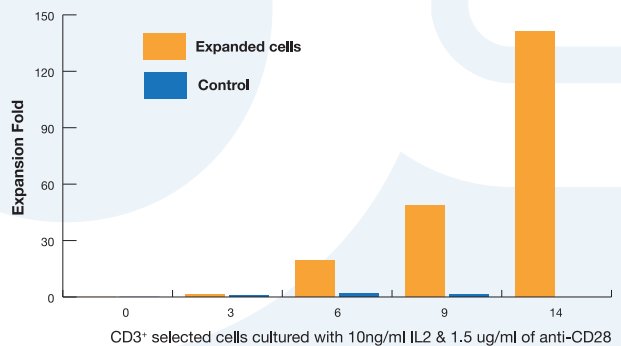


Figure 4: Time course of sequential T cell selection and activation using the FerroSelect T cell CD3<sup>+</sup> / CD28<sup>+</sup> Selection and Activation Kit

SKU: 28-0003: FerroSelect QP anti-CD3 Kit (Single)  
SKU: 28-0004: FerroSelect QP anti-CD3 Kit (5 Pack)

Research Use Only. Not for use in diagnostic procedures. Not for use in humans.



Scan here

See how **FerroSelect** turns **simply magnetic** cell selection into **simply magic** results!