



Simply magnetic

FerroSelect™ Ferrofluid

Purification of T cells from leukopaks using our core ferrofluids

Our unique ferrofluids are designed to provide consistent purification of desired cells from complex mixtures such as peripheral blood or leukopaks. When combined with our optimized FerroSelect™ biotinylated antibodies, you can expect quick and easy retrieval of your cells of interest, using either our Quadrupole magnets or our forthcoming FerroSelect Array closed, automated planar magnetic system.

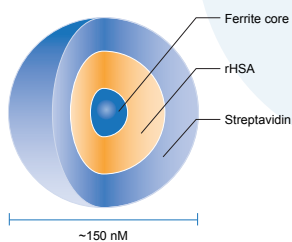
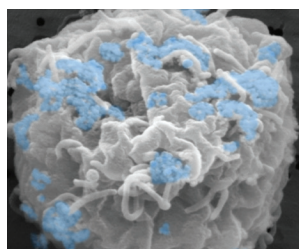


Figure1: Electromicrograph of ferrofluids attached to a T cell via the CD3 antigen. The amount of ferrofluid attachment is dependent on receptor numbers and amount of ferrofluid used per experiment

Research Use Only. Not for use in diagnostic procedures.
Not for use in humans.

Our ferrofluid nanoparticles:

- Are optimized with a nominal size distribution centered at 150 nM, avoiding steric limitations of micron-sized magnetic beads used in some competitive systems
- Cells coated with magnetic particles can be captured on a planar magnet radically simplifying the collection process and eliminating the need for column requiring equipment
- Use only human recombinant materials to assure consistency and avoid introducing animal components
- Are compatible with cGMP manufacturing processes.

SKU: 28-0027: FerroSelect Ferrofluid (Small)

SKU: 28-0029: FerroSelect Ferrofluid (Medium)

SKU: 28-0028: FerroSelect Ferrofluid (Large)

FerroSelect Ferrofluid is for use with biotinylated antibodies:

- One small vial supports the selection of approximately 1.2×10^8 cells
- One medium vial supports the selection of approximately 1.0×10^9 cells
- One large vial supports the selection of approximately 2.0×10^9 cells



Scan here

See how **FerroSelect** turns **simply magnetic** cell selection into **simply magic** results!